

Portraits *by* ShawnaLee

Hand drawn or painted in the timeless way!



Watercolors *with* ShawnaLee

Thank you for joining my Watercolor Art Class!

I am looking forward to sharing the joys of Watercolor painting with you!

Here is a list of recommended Materials to help you get the most out of your experience while saving you time and resources. Further information on following pages.

The basics to begin include:

- Watercolor paper
- Watercolors
- A few paint brushes
- Pencil & kneaded eraser
- Water rinse cup
- Paper towels & spirit of adventure!



Commissions in Charcoals, Oils; Art Lessons year round.
artist@shawnalee.com www.shawnalee.com



Watercolor Painting With ShawnaLee



Recommended materials to gather :

- **Watercolor paper:** 9x12" or 11x15" are good sizes. Can be found at Michaels or any art supply store such as Jerry's Artarama or Dick Blicks. Nice brands include Strathmore, Fabriano, New York Central, Utrecht, etc. The Artist's loft 140lb paper has provided students with decent results. If you want an exceptional experience, try some Utrecht 100% 140 lb Rag, Arches Rives (printmaking 100% rag paper), or similar.
- **Assortment of paint brushes** - various sizes and types. Gather what you've got for our first class. See following pages for pics of watercolor paint brushes. Once you understand what a watercolor "mop" looks like, you'll find them easier!
- **Watercolor paints** - Tube or solid cakes/half-pans; Good brands include Daniel Smith, Koi, Lukas, Winsor & Newton Cotman series, or any professional line etc. You only need an 8-12 color palette. Watercolors in tubes will need a portable palette (see photos).
- **Mixing area:**—could be porcelain plate, watercolor mixing plates or coated paper plates. Upcycled ice cream lids work great too!
- **Paper towels & Large Water rinse container.** Could be large yogurt cup, mason jar, etc.
- **Pencil and kneaded eraser.** "H" or "2B". Generals brand has nice kneaded erasers.

Additional helpful items:

- Some **salt**—about a teaspoon. If you have various sized salts, bring them!
- **Wax** (can be candle, crayons, oil pastels)
- Natural **sponges**, or kitchen type sponge.
- *Old toothbrush or other stiff brush (optional)*
- *Small bit of plastic wrap/bubble wrap. (optional)*
- *Painters non-stick tape (optional)*
- **Sense of adventure** for making new friends and having fun while learning!

Watercolor Paint Brush examples

Bring what you have, or Choose:

- one flat (about 1–1/2")
- a few rounds of various sizes.



After our first class, you will have a better idea of the kind of paint brushes you will enjoy.

ShawnaLee's **personal favorite watercolor paint brushes include:**

- #10 round "mop" style brush.
- Acrylic round #1 or 2 (stiffer)
- rigger/liner for details—nice and long for delicate lines while maintaining flow of paint bead.
- 1-2" flat brush from home depot



See All Blink Scholastic Red Sable Brushes and Sets

Blick Scholastic Red Sable Brush - Round, Long Handle, Size 14

★★★★☆ (3.7) 38 Reviews | Write A Review

Item #:05948-1014 [VIEW PRODUCT DETAILS](#)

SAVE 14% off List!

List \$20.99 **\$17.86**

- 1 [ADD TO CART](#)

✓ In stock online

Bulk Pricing Available	
Quantity	Price Each
12 - 23	\$16.07
24 - 49	\$15.25



📌 XDT#920 Round Watercolor Artist Paint Brush 3 Piece Set Medium Soft Black Goat Hair Long Handle #8#10#12, Mop Style Paint Brush for Watercolor & Acrylic & Oil

Visit the XDT Art Supplies Store

4.0 ★★★★★ (442 ratings)

50+ bought in past month

\$10⁴⁹ (\$3.50 / Count)

✓prime

Another option: <https://www.cheapjoes.com/catalog/product/view/id/26721/s/american-journey-interlocked-synthetic-travel-brushes/>



On Watercolor paints:

You only really need a basic set of 8 to 12 colors to start.



If you have a set of watercolors in tubes, you will be glad to have a nice tray to put your colors in (It's ok if they dry out). Here are some that are enjoyable:



If you get travel sets, they often come with their own areas for mixing.



Excellent trays for mixing:

Richeson 20 well tray:



artist@shawnalee.com

Rectangular porcelain palette



www.shawnalee.com

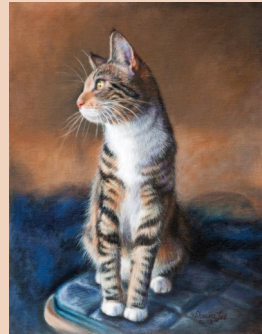
Portraits by *ShawnaLee*

Hand drawn or painted in the timeless way!



Portraits by ShawnaLee offers quality hand drawn or painted portraits in addition to an array of drawing & painting classes throughout the year. **If you've had a great experience—please let your friends know!** Please leave a review on google!

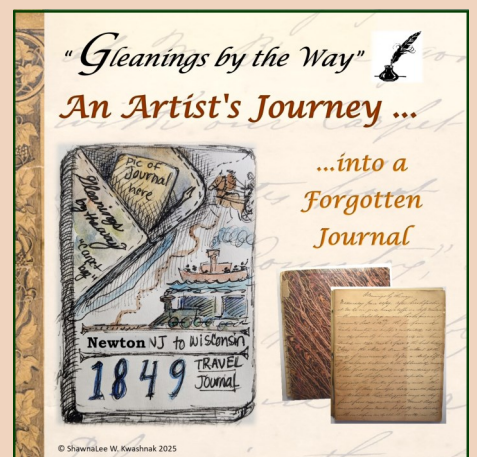
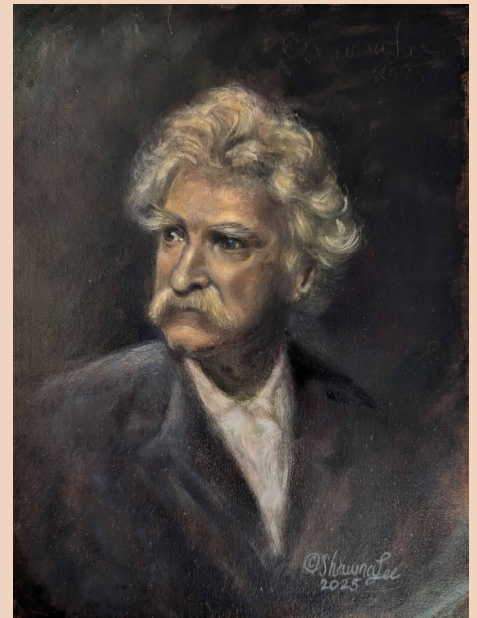
Thank you!



Oil paintings: Left: Motley. Right: Dandy with her person



Popular Charcoal pet portraits! Commission your pet's portrait today!



artist@shawnalee.com

www.shawnalee.com